



# SPECT/CT - NMCT 860



## I. EU NMCT 860

Qty.	Catalog Ref	Description	)
1	H3908AH	NMCT 860 3/8 System	
1	B75542HB	Europe Misc. Keyboard Kit	
1	H3909BG	NM800 NM600 Czech Operating Documents	
1	H2506TC	MEGP Collimators for D670/D630 (2 with Cart)	
1	H3909AD	NM800 LEHRS coll with cart	
1	H3602NG	Evolution for Planar Bone - Camera license	
1	H3602NH	Evolution for Bone - Camera license	
1	H3602NJ	Evolution for Cardiac - Camera license	
1	H3602NK	Evolution Toolkit - Camera license	
1	H3602PT	Evolution Cardiac Morphing - Camera license	
1	H2506TM	NM800/NM600 Fast WB Scan	
1	H2506TO	Q.Metrix Camera License	
1	H3903EB	X4 Multivendor Registration for 800/600 Series	
1	H3100PE	D670 QC Point Source HLDR	
1	H3100PF	D670 QC Flood Srchldr Kit	
1	H3100PL	Bar Phantom for 800/600-series gamma-camera QC	
1	H3602SL	Point source holder for gamma-camera quality assurance	
1	H2506KR	Norav ECG Gating for D630	
1	H3100NW	D670 Axial Head Holder	
1	H3100PG	Table top extender for D670/D630	

Ing. Tomáš Oberstein  
obchodní zástupce

**TARGEN EU**



Distributor  
GE Healthcare

Stargen EU s.r.o.  
Malešická 2251/51  
130 00 Praha 3  
Tel.: +420 724 157 107  
tomas.oberstein@stargen-eu.cz  
www.stargen-eu.cz



1	H3100PS	NM800/NM600 Touch Ruler
1	H3100NP	Straps and Pad Kit
1	E8500NA	Butterfly Armrest
1	E8500NB	Patient Arm Support System for Nuclear, PET/CT, MRI, width 48cm, coated, velcro attachment
1	E8500NC	Patient Leg Rest for Nuclear, PET/CT, MRI, coated
1	H3909CR	Smart Console OM Languages
1	H3909CL	NM800 NM600 Czech Printed Operating Documents
1	B77122CB	AWE Connection
1	B77862CB	Connect Pro Option
1	B78812CB	Exam Split FX
1	B77852CB	Volume Viewer on OC
1	B75542CT	ASIR Turbo Platform
1	B75542KB	Enhance Recon
1	B7888WF	WideView Option
1	H2401AF	Q.AC
1	B77292CA	Big cabinet
1	H2506TR	NM800/NM600 Detectors Dismount
1	S8390AL	X4 DR Server SPECT/CT
1	H3903CK	X4 XFL Remote Office
1	H3903CF	Second concurrent-use floating license client for Xeleris Server
1	H3903CM	X4 Evolution Bundle
1	H3901TV	Xeleris DICOM Viewer
1	H3904AM	X4 DR Enhanced CyberSecurity
1	H3904AN	Q.Volumetrix
1	H3904AP	X4 ECTB V4 SPECT
1	H3904CG	X4 ECTB V4 XFL client 1st
1	H3903DX	4DM SPECT for workstation
1	H3903DZ	X4 4DMSP XFL client 1st
1	H3903DF	X4 Q.Brain
1	H3903DG	X4 Q.Brain HMPAO NDB
1	H3903DM	X4 Q.Lung SPECT/CT
1	H3900PD	Manchester Renogram Analysis Package
1	H3901TW	Xeleris Wide Monitor
1	H3900JZ	Non-US PC & Monitor Power Cables
1	H3904CY	Xeleris Memory Extension (Z4 Only)
1	H3904BH	X4 DR Czech Language Kit
1	A20011NM	1 day NM onsite
1	A21021NM	2 days NM onsite
1	R12023AC	Mandatory A3 SSA Warranty package
1	E46011BR	CE PDB CT370-0/right
1	E4502F	14 KVA 3-phase partial UPS for VCT
1	A11181NM	Start Me Up 8 days NUC
1	A22241NM	Welcome pack – 4 additional application days onsite in NUC
1	A33331NM	Make Me an Expert NUC
12	W50341NM	Prepaid Focus contract with full coverage (Monthly basis) for NM/CT 860

# LONG DESCRIPTIONS

All pictures featured are for illustration purposes only, and do not necessarily relate to products or services mentioned in the text.

## H3908AH - NMCT 860 3/8 System

NM/CT 860 system is a hybrid SPECT/CT imaging system. It is an all-purpose, dual-detector, free-geometry integrated nuclear imaging camera that features the advanced Elite NXT detector technology, slim gantry, cantilevered patient table, an Acquisition station, Smart Console digital processing workstation and the Xeleris\* processing and review workstation, now combined with the Revolution ACTs CT system that has been adapted for the NM/CT 860 hybrid SPECT/CT imaging system

The Elite NXT detectors feature 3/8" or 5/8" thick detectors for all-purpose nuclear imaging.

The adapted Revolution ACTs is an 8-Slice CT with optional 16 Slice overlapped reconstruction in axial scanning mode, with short geometry designed gantry, 2.0 MHU tube anode heat storage capacity, maximum power of 24 kW and New Clarity panel detector HiLight™ scintillator with DAS on detector (DoD) and other advanced OptiDose\* dose management features.

Key features of the free-geometry NM/CT 860 design include:

- Slim-profile, wide-bore, robotic gantry design
- 180° and 90° orientations of the NM detectors for high SPECT and WB scanning efficiency
- Rapid, simultaneous multi-axis gantry motions
- Upright and horizontal detector orientations for exceptional clinical versatility, including patients that are in a hospital bed, standing or sitting during scan
- Multi-functional, dual-axis imaging table
- Automatic "home" positioning enables easy setup of the gantry and the table using pre-programmed detector geometries and imaging modes
- Real-time automatic body contouring
- User-friendly, intuitive Linux-based user interface
- Smart Console™ provides automated processing, connectivity, and user collaboration tools, for enhanced workflow and accessibility.
- Ignite integrated workflow with Xeleris processing and review workstation designed to help enhance departmental productivity

## H2506TC - MEGP Collimators for D670/D630 (2 with Cart)

Set of two medium energy general-purpose collimators with cart for Discovery NM/CT 670 or Discovery NM 630 gamma-camera.

Includes:

- Two MEGP Collimators
- One mobile cart for storage

## H3909AD - LEHRS COLL With CART (Swiftscan)

NM 800 Low Energy High Resolution and sensitivity Collimators includes two collimators and a dedicated collimator cart.

NM800 LEHRS collimator bundles two image processing features for improved productivity and image quality: SwiftScan SPECT and SwiftScan Planar.

SwiftScan SPECT

- SPECT and Gated SPECT scanning using the “Step and Shoot Continuous” mode bundled with LEHRS collimator for improved small lesion detectability and up to 25% time or dose reduction

#### SwiftScan Planar

- Static and Whole-Body scanning using “Clarity 2D” post processing bundled with LEHRS collimator for improved small lesion detectability and up to 25% time or dose reduction

### **H3602NG - Evolution for Planar Bone - Camera license**

Systems that need Camera licenses are: Infinia WinXP family, Ventri, Discovery NM 530, Discovery NM/CT 570 and Discovery NM/CT 670.

Please make sure to include the Evolution for Planar Bone software and note that only 1 camera license is needed for all Xeleris Workstations connected to the Camera.

### **H3602NH - Evolution for Bone - Camera license**

Cameras that use Camera licenses are: Infinia WinXP family, Ventri, Discovery NM 530, Discovery NM/CT 570 and Discovery NM/CT 670.

Make sure you already purchased the Evolution Algorithm Engine (Need only 1 per workstation) plus the Evolution for Bone software and remember that only 1 camera license is needed for all Xeleris Workstations connected to the Camera.

### **H3602NJ - Evolution for Cardiac - Camera license**

Cameras that use Camera licenses are: Infinia WinXP family, Ventri, Discovery NM 530, Discovery NM/CT 570 and Discovery NM/CT 670.

Make sure you already purchased the Evolution Algorithm Engine (Need only 1 per workstation) plus the Evolution for Cardiac software and remember that only 1 camera license is needed for all Xeleris Workstations connected to the Camera.

### **H3602NK - Evolution Toolkit - Camera license**

Cameras that use Camera licenses are: Infinia WinXP family, Ventri, Discovery NM 530, Discovery NM/CT 570 and Discovery NM/CT 670.

Make sure you already purchased the Evolution Algorithm Engine (Need only 1 per workstation) plus the Evolution Toolkit software and remember that only 1 camera license is needed for all Xeleris Workstations connected to the Camera.

### **H3602PT - Evolution Cardiac Morphing - Camera license**

Cameras that use Camera licenses are: Infinia WinXP family, Ventri, Discovery NM 530, Discovery NM/CT 570 and Discovery NM/CT 670.

Make sure you already purchased the Evolution Algorithm Engine (Need only 1 per workstation) plus the Evolution Cardiac Morphing software and remember that only 1 camera license is needed for all Xeleris Workstations connected to the Camera.

## **H2506TM - NM800/NM600 Fast WB Scan**

The NM600 FAST WB SCAN enhancement option provides complete WB continuous scan in less than a minute (up to 200 cm/min), enabling monitoring the uptake of isotopes injected through patient feet.

## **H2506TO - Q.Metrix Camera License**

Q.Metrix enables employment of SPECT and CT segmentation tools for quantifying radiopharmaceutical uptake using patient demographics information.

Camera License available for Discovery NM/CT 670, Optima NM/CT 640 and Discovery NM/CT 670 Pro.

## **H3903EB - Multi-Vendor Registration License for Xeleris**

A license that allows the use on non-GE systems data on the Xeleris workstation.

## **H3100PE - D670 QC Point Source HLDR**

An L-shaped metal plate attachable to the wall with an opening for a syringe in order to acquire point source-based flood acquisition at a few meters distance from vertically positioned detector for QA purposes.

## **H3100PF - D670 QC Flood Srchldr Kit**

Quality Control Flood Source Holder Kit

A large plate mounted at a small distance above the NM detector on which the flood source is positioned in order to perform acquisition of flood studies for QA/QC purposes.

## **H3100PL - Bar Phantom for 600-series gamma-camera QC**

Bar phantom for spatial resolution and linearity tests of gamma cameras. The phantom consists of four quadrants with different bar specification.

For each of the quadrant, bar spacing is 2.5mm, 3.2mm, 3.5mm & 4.0mm.

## **H3602SL - Point source holder for gamma-camera quality assurance**

Center of rotation source holder for Quality assurance, easily attached to Infinia or Ventri table.

## **H2506KR - Norav ECG Gating for D630**

Norav ECG Gating for D630

### **Package Contents**

The PC-ECG 1200 package contains the following elements:

- Acquisition box
- Patient cable

## INDICATIONS FOR USE

Trigger testing intended use: ECG Trigger provides ECG and R-Wave pulse for display and triggering applications. It is intended for use when TTL level pulse should be triggered during medical tests.

E.g. MRI, CT, Ultra Sound, Nuclear Medicine etc.

## H3100NW - D670 Axial Head Holder

The Axial Head holder is ergonomically designed to position patient's head outside of the patient tabletop pallet, enabling brain SPECT orbiting as close as possible to the patient's skull with maximal coverage of the target tissue.

## H3100PG - Table top extender for D670/D630

Table top extender for Discovery NM/CT 670 or Discovery NM 630

This table top can be used to extend the table top so that it is possible to position a patient feet in and perform SPECT/CT in the head and neck area.

Length is 600mm, Width 391mm, 300mm extend

Note: the use of the extender requires longer space between the camera and the back wall of the room and is not possible with minimum room size requirement.

## H3100PS - NM800/NM600 Touch Ruler

An interactive touch-sensitive device mounted at one side of the patient table, used to define nuclear imaging scan range (start and stop points), saving the need to enter these values manually from the operator console. This saves necessary manual operation and greatly aids clinical efficiency.

## H3100NP - Straps and Pad Kit

A set of tabletop pad and straps used to secure the position and reduce motion of patients scanned on Discovery NM 600 series

## E8500NA - "R-Made" armrest for Nuclear Medicine table

### Description:

This armrest has been designed to eliminate motion artifact caused by the discomfort and pain of prolonged hyper extension during cardiac SPECT or other imaging procedures. Constructed of high density polyethylene it is durable and easily cleaned. Recommended with Optima Systems.

### Features:

- Dimensions 46 x 35.5x 20cm
- Weight: 1 kg

## E8500NB - Patient arm support for nuclear PET/CT, MRI

### Features/Benefits

- Ergonomically designed positioning product developed to prevent arm and shoulder pain and to also reduce related motion artifact that commonly occurs during supine imaging
- This safe, clinically proven Patient Arm Support combines total arm support and passive restraint, thereby increasing patient comfort during extended procedures
- Designed to accommodate virtually all patients, this product not only enhances patient comfort it improves patient throughput

### Specifications

- Velcro-mounted; easily cleaned
- Sold per Each

### Compatibility

- Compatible with most Nuclear Imaging systems and can also be used in MRI, CT and PET applications

## E8500NC - Contoured patient leg rest for nuclear, PET/CT, MRI

### Features/Benefits

- The Contoured Leg Rest is a unique support product created to prevent the cycle of low back stress and pain that commonly occurs during supine imaging and treatment
- Positioned under the knees, the Contoured Leg Rest produces mild lumbar spine extension and hip flexion, causing the pelvis to rotate forward creating greater low back support and torso stability. The unique leg recesses create additional lateral support thereby minimizing both rotational and translational body motion

### Specifications

- Constructed of full support polyfoam with a seamless coated finish
- Velcro-mounted; easily cleaned
- 18 cm tall from table surface to top of support
- Sold per Each

### Compatibility

- Compatible with most Nuclear Imaging systems and can also be used in MRI, CT and PET applications

## H3909CR - Smart Console OM Languages

SmartConsole Operator Manual, contains all translated Languages

## B77122CB - AWE Connection

The AW Server client on the CT console is a software option that provides access to applications hosted on an AW Server, at the CT console.

It offers customers the use of applications on the CT console for improved workflow and productivity.

## B77862CB - Connect Pro Option

### ConnectPro HIS/RIS Interface Option

ConnectPro offers new levels of productivity to users by providing a connection between the Facilities Hospital (HIS) or Radiology (RIS) Information System. ConnectPro Simplifies and Eliminates Errors in Patient Data Entry.

#### Data Available at the Operator Console When Using ConnectPro Includes:

- Procedure Step Code/Description
- Requested Procedure Code/Description
- Performed Procedure Step Compatibility
- Demographic Data - Name, ID, Age, Birthday, Sex, etc.
- Study UID - Unique ID Number
- Scheduling Info - Dept, Modality, Station, Address, Accession #, Date, Time

#### The Operator has Three Convenient Ways to Enter Patient Information:

- Type in Unique Identification Number
- Select from a List of Patients

#### All of This Results in:

##### Enhanced Productivity

- Direct Patient Data Entry
- On-line Access to Schedules
- Display of Patients Scheduled for Current Time of Day
- Full Simultaneity with All Scanner Operations
- Eliminates Errors Critical for "Filmless" Operation
- Enhances Quality of Care
- Obtain Key Data from Your HIS/RIS via, Modality Worklist - Allergies, Pregnancy, Status, Medical Alerts
- Easy to Use
  - User-selectable Filtering and Sorting
  - Seamless Integration with LightSpeed
  - Performed Procedure Step Compatibility

Note: May Require Interface Box for Conversion of HL7 to Dicom.

## B78812CB - Exam Split FX

Allows multi-anatomic exams to be read in separate anatomic sections. This allows specialists to review only those images needed for a given requisition

## B77852CB - Volume Viewer on OC

AW VA2, VR2 & Nav2 for the Operator Console includes Volume Analysis, Volume Rendering and Navigator Software.

This Combination Allows the User to Render Volumetric Data in Three Dimensions for Use in Analysis of Patient Condition i.e. CT Angiography (CTA), gives more Information on the Spatial Relationships of Structures than Standard 3D, Allows the Translucent Visualization of Structures for Improved Problem Solving, can Perform "Virtual Endoscopies" of Air and Contrast Filled Structures. Enables 3D Reformats in any Plane ALL on the Xstream ready Console.



## **B75542CT - ASiR Turbo Platform**

ASiR technique enables reduction in image noise and improvement in image quality, low contrast detectability and contrast resolution.

## **B75542KB - Enhance Recon**

Enhances the reconstruction speed by enabling higher fps for image re-construction.

## **B7888WF - WideView Option**

Only available for the BrightSpeed 4. Features transplanted from the RT which enables to extend the display field of view by reconstruction up to 65cm .

This is a dramatic 41% increase that will allow clinicians to see more anatomical information as well as the complete skin surface for improved radiation therapy simulation and planning.

Pre-requisite: Xstream Console

## **H2401AF - Q. AC**

Software package for maintaining AC quality at low CT dose. It's unique CT reconstruction and processing algorithms provide SPECT attenuation correction that maintains quantitative SPECT measurements accuracy even at very low CT dose.

## **B77292CA - Big cabinet**

Service cabinet for system accessories storage

## **H2506TR - NM600 Detectors Dismount**

An option enabling transportation and mobilization of the NM600 series gantry separated from the detectors for easier load in elevators or easier access through restricted paths such as narrow hallways or doorways.

## **S8390AL - X4 DR Server SPECT/CT**

Xeleris\* 4 DR SPECT/CT molecular imaging server is a Nuclear Medicine, PET, NM/CT, and PET/CT processing, analysis, and review system. Designed to leverage the latest SPECT quantitative applications for routine clinical use, it accelerates workflow and improves diagnostic confidence. The Xeleris 4 DR opens the doors to the new era of digital healthcare delivery through the enablement of Healthcare Cloud potential and advanced applications to help solve some of the most complex clinical presentations.

Combining streamlined workflow with a comprehensive clinical library and extensive networking capabilities on a molecular imaging workstation, Xeleris 4 DR is at the nucleus of productivity in the clinical imaging department along with enhanced security features. Utilizing the GE Healthcare-wide graphical user interface, Xeleris 4 DR is the processing and review platform of the Discovery\*, Optima\* and Brivo\* NM and NM/CT series, Infinia\* Hawkeye\* 4, Ventri, Discovery PET/CT 600 series, and all other molecular imaging cameras in GE Healthcare's current offering.

Xeleris 4 DR provides the automated processing and connectivity necessary in today's demanding environment.

Xeleris 4 DR SPECT/CT Server incorporates one Xeleris Floating license and includes Motion detection & correction software, is Evolution\*-ready with the capability to process studies acquired with Evolution GE cameras, and Volumetrix IR & 3D for SPECT/CT and fused image review.

### H3903CK - XFL Remote Office

Extends Xeleris Floating License over Wide Area Network (WAN).

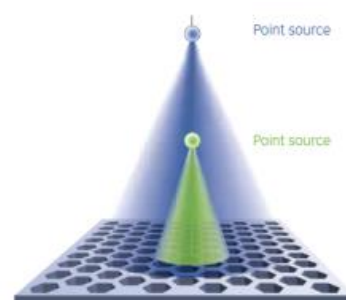
### H3903CF - XFL 2nd Client

Second concurrent-use floating license client for Xeleris Server

### H3903CM - X4 Evolution Bundle

X4 Evolution Bundle software license for a single Xeleris 4 Workstation and all its XFL clients. This item contains the following Evolution licenses.

- Xeleris 4 Evolution for Bone (EfB): Provides Evolution Resolution Recovery reconstruction on SPECT bone scans. The EfB application may be utilized to provide equivalent image quality on half-dose or half-time bone scans. This license processes Infinia 2, Infinia Hawkeye 4, and Discovery 600 family of camera data. EFB SPECT CAMERA LICENSE (H3602NH) required.
- Xeleris 4 Evolution for Planar bone (EfPB): Enables reduced time or dose on whole body or spot bone studies. EfPB provides adaptive Structure Matching Non-Local filtering on planar bone scans. The EfPB application may be utilized to provide equivalent image quality on half-dose or half-time bone scans. This license processes Infinia 2, Infinia Hawkeye 4, and Discovery 600 family of camera data. Evolution Planar Bone Camera license (H3901NF) required.
- Xeleris 4 Evolution for Cardiac (EfC): Provides Evolution Resolution Recovery Reconstruction on SPECT Myocardial Perfusion Imaging (MPI) scans. The EfC application may be utilized to provide equivalent image quality on half-dose or half-time MPI tc99m scans. This license processes Infinia 2, Infinia Hawkeye 4, Ventri, and Discovery 600 family of camera data. EFC SPECT CAMERA LICENSE (H3602NJ) required.
- Xeleris 4 Cardiac Morphing (CM): Provides Elastic registration of gated cardiac cycle to the end diastolic bin. The removal of blurring in the cardiac cycle provides enhanced clarity of myocardial wall visualization. Processes data from Infinia 2, Infinia Hawkeye 4, Ventri and Discovery 600 family of camera data. CARDIAC MORPHING CAMERA LICENSE (H3602PT) required.



#### X4 Evolution Bundle contains following Evolution licenses:

- Evolution Plug-In
- Evolution for Bone (EfB camera license required - H3602NH)
- Evolution for Planar Bone (EfPB camera license required - H3901NF)
- Evolution for Cardiac (EfC camera license required - H3602NJ)
- Evolution Toolkit (Tk camera license required - H3602NK)
- Cardiac Morphing (CM camera license required - H3602PT)

## H3901TV - Xeleris DICOM Viewer

The Xeleris DICOM Viewer enhances access to molecular imaging data by providing a DICOM viewing application for general and hybrid Nuclear Medicine studies in a common Xeleris user interface. The application may be distributed on CD, DVD or network destination via Xeleris interface. The Xeleris DICOM Viewer has two components:

Essential Viewer which includes:

- Planar,
- Dynamic,
- DICOM SC,
- DICOM MFSC support.

Basic Workspace review tools including:

- Scroll,
- Pan and Zoom,
- Color map,
- Window level Measurement.

Operates on:

- Windows XP,
- Windows Vista,
- Windows 7,
- Windows 8.

Lumetrix Viewer which includes:

- 3D MIP display and triangulation to 2D images
- Synchronized triangulation between SPECT-CT and PET-CT images for optimum localization
- SPECT-CT and PET-CT fusion with blending tools
- Predefined layouts for optimum SPECT-CT and PET-CT display
- Oblique reformatting

## H3904AM - X4 DR Enhanced CyberSecurity

The Enhanced Cyber Security option provides additional security layer utilizing McAfee's Application Control (Whitelist).

Activation of McAfee's Application Control might adversely impact system performance.

## H3904AN - Q.Volumetrix

Optional software for Volumetrix MI that enables advanced segmentation and quantitation capabilities for SPECT/CT and PET/CT data.

Enables routine quantitative SPECT results in the form of MBq/ml and SPECT SUV (Standard Uptake Value) without workflow impediments for both base line and longitudinal studies, especially where relative quantitation is insufficient

Utilizes advanced quantitative reconstruction with compensation for Attenuation, Resolution and Scatter. Patient demographics and dose information are incorporated to provide accurate quantitative results.

Quantitative SPECT/PET results are further enhanced with advanced segmentation tools providing 2D and 3D organ and lesion characterization. The Q.Volumetrix option provides quantitative patient follow-up.

Supports data from GE Healthcare 600's Hybrid products using the following isotopes: 99mTc, 201Tl, 111In, 123I, 131I, 67Ga, Lu177 and collimators: LEHR, MEGP, HEGP, ELEGP, LEHS, WEHR45, LEHRS

### H3904AP - X4 ECTB V4 SPECT

ECTB V4 SPECT is a comprehensive set of nuclear cardiology protocols for advanced cardiac analysis, including a variety of databases of normal patients for comparison covering various acquisition protocols, including 1 and 2 day Sestamibi, Dual Isotope, Stress/ Rest Tetrofosmin, Thallium, Myoview Pharmacologic Stress, and a 1 day Rest/Stress Tetrofosmin for GE Healthcare Discovery NM 530c and NM/CT 570c cameras.

### H3904CG - X4 ECTB V4 XFL client 1st

ECTB V4 XFL client 1st adds a single (XFL) Floating Client for ECToolbox

### H3903DX - 4DM SPECT for workstation

4DM SPECT License for Xeleris workstation. A comprehensive set of nuclear cardiology protocols for advanced cardiac analysis developed by Invia and the University of Michigan Medical Center in Ann Arbor, Michigan including 4DM-SPECT, 4DM-PET and 4DM-CT options.

- Automated Workflows
- Multi-Monitor support
- Fusion SUV
- Calcium Scoring Database
- Audit Logging
- HL7 Export 4DM-SPECT (option)

A comprehensive cardiac SPECT display and quantification program for gated and ungated SPECT perfusion studies which includes its own report generation package.

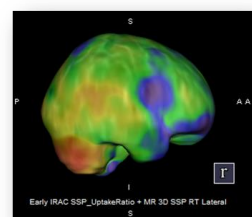
### H3903DZ - 4DM SPECT for XFL 1st Client

4DM SPECT License for 1st XFL client

### H3903DF - X4 Q.Brain

X4 Q.Brain allows the user to visualize and quantify relative changes in the brain's metabolic function or blood flow activity between a subject's images and controls, when used with radiopharmaceuticals approved by the regulatory authority in the country of use, which may be resulting from brain function alterations in:

- Epileptic seizures
- Dementia, such as Alzheimer's disease, Lewy body dementia, Parkinson's disease with dementia, vascular dementia, and frontotemporal dementia.
- Inflammation
- Brain death
- Cerebrovascular disease such as acute stroke, chronic and acute ischemia
- Traumatic Brain Injury (TBI)



When integrated with the patient's clinical and diagnostic information, Q.Brain application may aid the physician in the interpretation of cognitive complaints, neuro-degenerative disease processes and brain injuries.

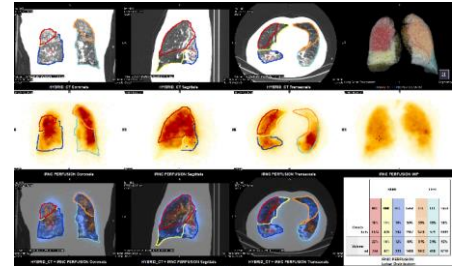
## H3903DG - Q.Brain Normals for HMPAO

Q.Brain Normals Data base for HMPAO Ceretec

## H3903DM - X4 Q.Lung SPECT/CT

X4 Q.Lung SPECT/CT application may aid physicians in:

- Diagnosis of Pulmonary Embolism (PE), chronic Obstructive Pulmonary Disease (COPD), Emphysema and other lung deficiencies.
- Assess the fraction of total lung function provided by a lobe or whole lung for Lung cancer resection requiring removal of an entire lobe, bilobectomy or pneumonectomy.



## H3900PD - Manchester Renogram Analysis Package

### Manchester Renogram Analysis Package

The Manchester Renogram Analysis Package is an Aladdin program, which has been developed by the Nuclear Medicine Department at Manchester Royal Infirmary (UK) for analysis of renogram data on GE nuclear medicine workstations.

The program incorporates several features which have been established as clinically useful over the authors many years of experience in renogram analysis at Manchester Royal Infirmary. These include:

- Background subtraction using either the Rutland/Patlak plot, two perirenal regions of interest or a single manually drawn background region.
- Ability to deal with duplex kidneys and solitary kidneys.
- Verification of regions of interest against a dynamic display of the whole renogram study to ensure correct region placement.
- Allowance for attenuation due to kidney depth by a choice of three methods.
- Renogram curves scaled to percentage of administered activity using predetermined sensitivity factors for each camera/collimator used.
- Fixed axis ranges for curve display to aid 'at a glance' visualisation of whether curves represent good or poor function.
- Representative images with regions superimposed are displayed along with curves to show where regions were placed.
- Results of multiple processing of the same data may be saved for redisplay at a later date.
- Separate summed image display to give better visualisation of images alone.
- Ability to quantify activity remaining in kidneys on any late static images.

## H3901TW - XELERIS WIDE SCREEN LCD

Xeleris 23" Wide Screen Display

23" wide-screen LCD color monitor

## H3900JZ - Xeleris Power Cable

Xeleris Power Cable

## A20011NM - 1 day NM On-Site

### Executive overview :

The additional On Site Application is a pick and choose formula

### Course Level :

Basic knowledge / Improving Performance

### Who should attend :

Physicians, Physicist and technologists

### Pre-requisite :

Topic dependant

### Courses Description :

8 hours

- NM Workstation basic 1 day
- Gamma Camera 1 day
- Hawkeye Acquisition 1 day
- Cardiac Applications 1/2 day
- Renal Applications 1/2 day
- Optional Software 1/2 day
- Bone applications 1/2 day
- Funtional Anat. Mapping 1/2 day
- OSEM/OSEM 1/2 day
- Image Registration 1/2 day
- Review template 1/2 day
- Data Display Screen 1/2 day

### Delivery mode :

On site

### Language :

Local language when available or English

### Material needed :

Gamma-camera and/or workstation

### Number of participants :

4 maximum

## R12023AC - Standard Service Package/License

The Standard License provides access to service tools used to perform basic level service on the Equipment and is included at no charge for the warranty period.

## A11181NM - Start Me Up 8 days NUC

### Customized on-site Application training

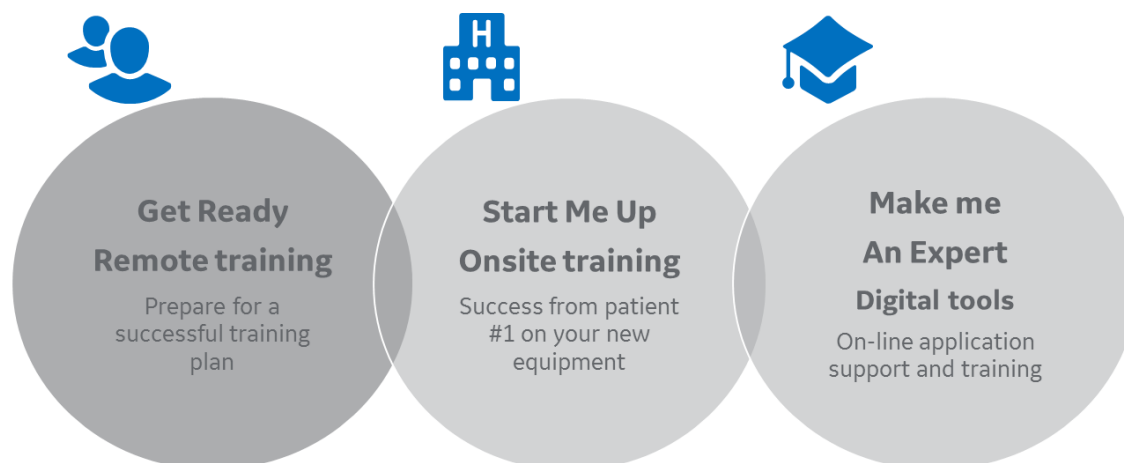
Get the best use of your GE Equipment with the GE CARES program.

The program is divided into 3 steps, it is tailored to adapt to staff's level of expertise to deliver the most adapted training.

We define together in advance your application needs and pre-training for an efficient on-site training experience (8 days).

After your on-site application, we offer you unique access to an expert for live assistance and application training follow-up directly on your equipment.

We support you throughout the live of your imaging equipment by providing privileged access to interactive clinical webinars with experts and on-line courses



Duration: 8 days onsite training

**Target attendees:** Radiographers, Technologists, Radiologists, Physicians, Cardiologists

**Course Leader:** GE Clinical Education Specialist

**Certification:** GE Healthcare Education Certificate

**Language:** Local Language when available or English

**Number of Participants:** Maximum 4 people per session

**Expiry date:** Available during the warranty period

## A22241NM - Welcome pack – 4 additional application days onsite in NUC

### Customized on-site Application training

Get the best use of your GE Equipment with the GE CARES program.

The Welcome pack is an option offering you 4 additional days onsite, after the Start me Up application days.

**Duration:** 4 days onsite training

**Target attendees:** Radiographers, Technologists, Radiologists, Physicians, Cardiologists

**Course Leader:** GE Clinical Education Specialist

**Certification:** GE Healthcare Education Certificate

**Language:** Local Language when available or English

**Number of Participants:** Maximum 4 people per session

**Expiry date:** available during the warranty period only

## A33331NM - Make Me an Expert NUC

### Customized on-site Application training

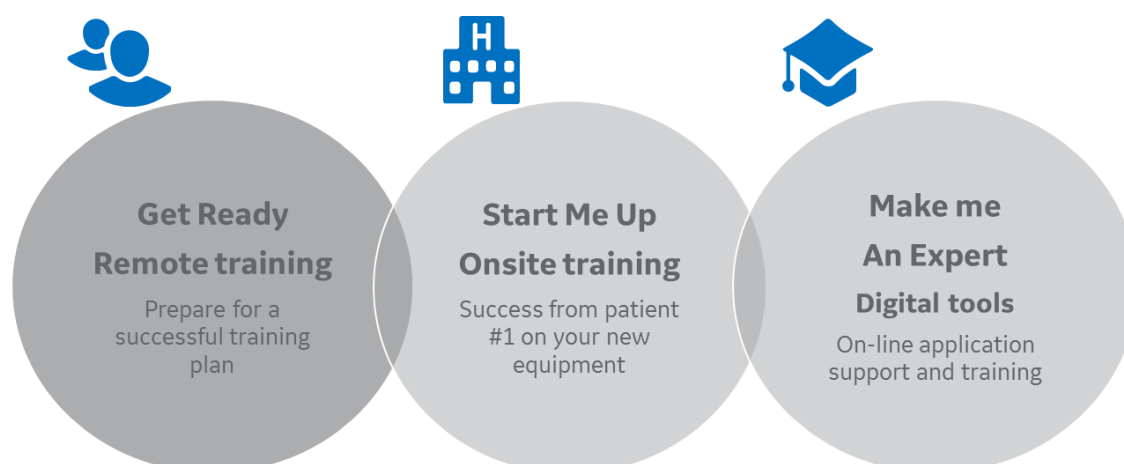
Get the best use of your GE Equipment with the GE CARES program.

The program is divided into 3 steps, it is tailored to adapt to staff's level of expertise to deliver the most adapted training.

We define together in advance your application needs and pre-training for an efficient on-site training experience.

After your on-site application, we offer you unique access to an expert for live assistance and application training follow-up directly on your equipment.

We support you throughout the live of your imaging equipment by providing privileged access to interactive clinical webinars with experts and on-line courses





**Target attendees:** Radiographers, Technologists, Radiologists, Physicians, Cardiologists

**Course Leader:** GE Clinical Education Specialist

**Certification:** GE Healthcare Education Certificate

**Language:** Local Language when available or English

**Number of Participants:** Maximum 4 people per session

**Expiry date:** Available during the warranty period

## W50341NM - Prepaid Focus contract with full coverage (Monthly basis) for Discovery NM/CT 670 ES 8sl

### Warranty Extension (Monthly fees) - Basic Service Level Agreement

**Key Performance indicators\*** *(Please remove inappropriate lines / content in the following tables)*

	UK & Ireland	Denmark	Finland	Sweden	Norway	Netherlands
Remote response time in less than (working hours)*	1H	2H	2H	2H	2H	2H
Onsite intervention within (working hours)*	8H	12H	12H	12H	12H	12H

	Czech Republic	Greece	Hungary	Romania	Bulgaria	Slovenia
Remote response time in less than (working hours)*	4H	4H	4H	4H	4H	4H
Onsite intervention within (working hours)*	16H	16H	16H	12H	16H	16H

	Slovakia	Croatia	Serbia	Israel
Remote response time in less than (working hours)*	4H	4H	4H	2H

Onsite intervention within (working hours)*	<b>16H</b>	<b>16H</b>	<b>16H</b>	<b>12H</b>
---	------------	------------	------------	------------

\*If no additional warranty extension selected (Power Speed Package or Trust Educational Package)

## Included in the warranty extension

### OEM Care Program:

- Access to local Service Center during working hours
- Unlimited Remote Support via **InSite™** technology
- Preventive maintenance (Frequency and duration complying to current OEM recommendations)
- Unlimited number of corrective maintenances
- Standard parts coverage
- Special parts coverage (tube, detector, coils, ...)

### Digital services:

- Unlimited access to **iCenter**
- **iLinq** remote access 24/7
- Customer service mobile application (Service history and incident notification)

With the warranty extension, you are supported by intelligent digital solutions to help maintaining high-quality standards:

### Insite is a service platform engineered for a fast and efficient response.

- Quick connection to one of our technical remote experts
- Problem diagnosis and remote fix (Restart your activity within 2-3 hours after an incident in 50% of the cases)
- Faster Parts delivery (If needed parts allocation is directly triggered by remote engineers).

### iCenter - Your GE asset management platform: Make better decisions with greater insight.

- Secured and personalized web service platform
- Online Access: to full maintenance history and planning
- Clear Status: of your equipment in real time
- Visibility: on your maintenance contract and replaced parts
- Asset utilization tool: monitors the activity of your assets
- Facilitate your decisions
- Help increase staff productivity

### iLinq - Raise a request for support (Technical or clinical), using a simple icon on the operator console